

Jam Side Up!

Technical Rider

By The Kif-Kif Sisters



September 5th 2021

Thank you for booking us! If you have any questions or problems providing any of the items mentioned below, please get in touch with us.

CONTACT

Françoise Lépine

Phone number: 1-418-554-1778

Email: info@kif-kif.ca

Website: www.kif-kif.ca

TOURING TEAM: 2 artists

DURATION: 40 minutes

PUBLIC: All audiences. Content adaptations are made for children's shows.

LANGUAGE: French, English, Spanish, Italian or Mute (The show is mostly visual).

STAGE REQUIREMENTS

Ideal dimensions:

- Area: 8,4m X 6,7m (27,5' X 22')
- Ceiling height: 3.5m (11.5')
- Wings: 1m (3')

Minimum dimensions:

- Area: 5m X 3,5m (16' X 12')
- Height: 2.3m (7.5')

LIGHTING

- 1 programmable light console
- 12 fresnels 1kW, for backlighting, L-115 and L-193
- 6 profiles 50, for warm and cold tips, L-441 and L-201
- 2 profiles 50, side lights, L-328
- 2 profiles 36, tips, L-328
- 4 profiles 26, for specials, L-154
- 2 profiles 26, side floors, L-201
- 8 Source 4 25/50, for the FOH, three cold L-53 and three warm L-154
- 4 moving lights, if available

We would appreciate using the theatre's gels. If that's not possible, we will provide them.

AUDIO

- 1 mixing desk.
- P.A. system, adapted to the theatre.
- 2 side fill monitors.
- 2 cardioid unidirectional microphones (Preference: Crown PCC 160).
- A DI box on stage, with cable, for the use our iPod, downstage left.

Note: The cardioid microphones are for a stereo captation of the stage and must be installed at the front of the proscenium. In some cases, they may not be used.

MISCELLANEOUS

- 3 extension cords on the stage (USR, USL and DSL). The USR one must be connected alone to a 15A circuit.
- 6 15lbs sandbags or anything similar
- 1 vacuum cleaner (preference: Shop-Vac) to clean the stage after the show.
- 1 large broom and a trash can.

STAFF / SCHEDULE**Set-up (4 hours)**

- 1 technical director
- 1 light technician
- 1 sound technician

- 30 minutes, load-in
- 45 minutes stage set-up
- 90 minutes, lighting set-up, focus and cue recording
- 30 minutes, cue-to-cue
- 30 minutes, soundcheck

Show (40 minutes)

- 1 light technician to follow the cue-sheet

Take down (75 minutes)

- 15 minutes to clean-up the stage
- 60 minutes backstage, to disassemble our props

DRESSING ROOMS

- 1 table and 2 chairs
- Accessible 2 hours before the show
- No water bottles needed (for ecological reasons)
- If snacks are provided, please kindly provide a vegetarian option.

WARNING

Pieces of vegetables and feathers will be thrown in the air during the show (about a quarter of a pillow). In the case where open flames are allowed, a torch will be used for about 3 seconds in the show.

TRANSPORTATION

The material fits tightly in a sedan car, with the 2 artists and driver.

ROOMING

One double room, with two beds and window

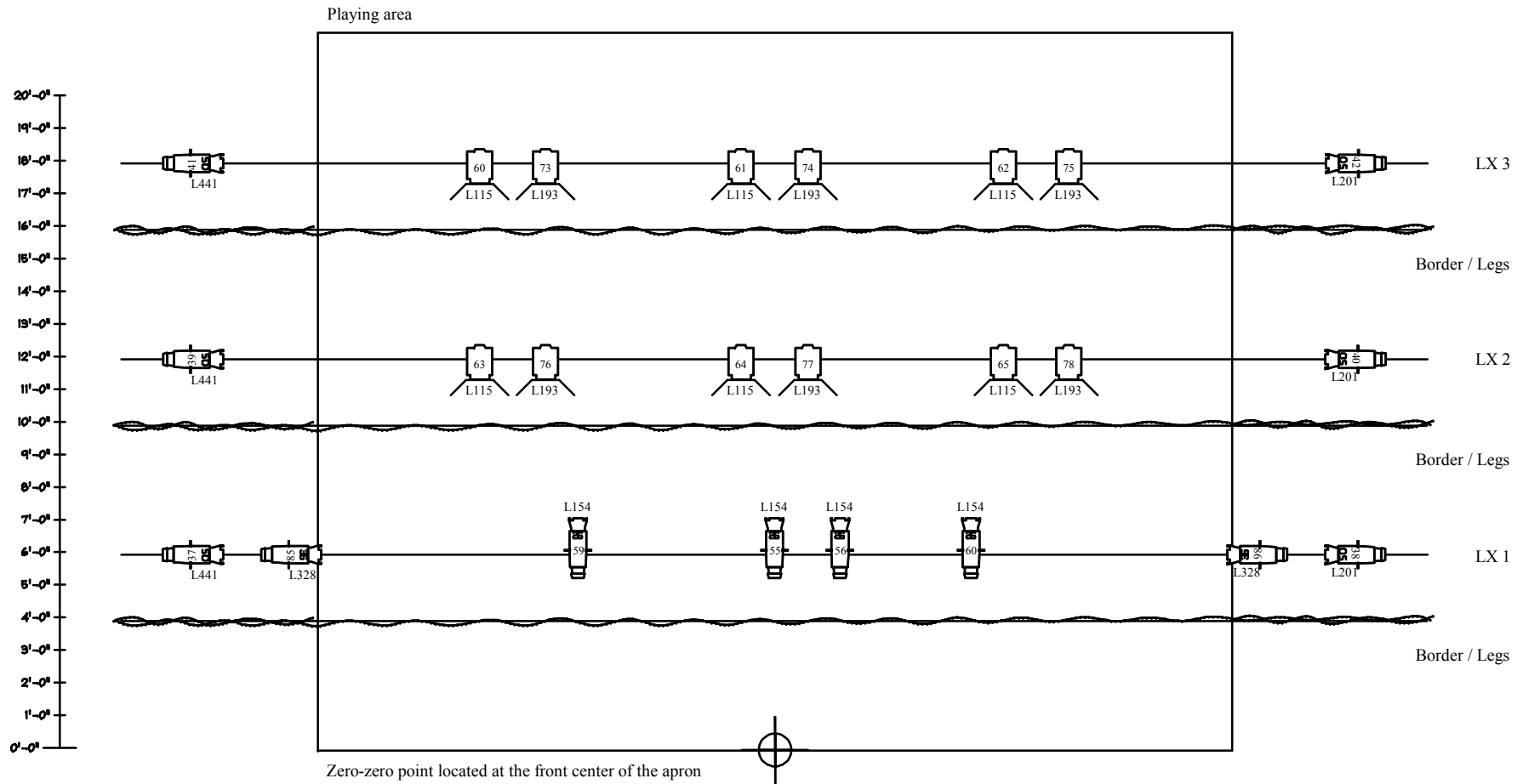
PLAN VIEW (Top)

Les Soeurs Kif-Kif

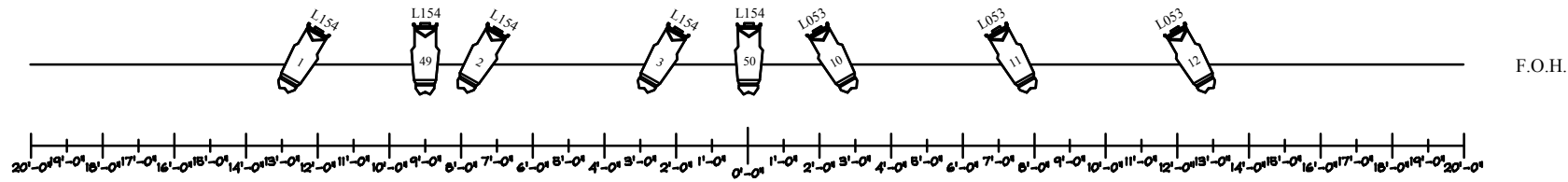
Version 1: 16/09/20

Scale: 1" / 5'

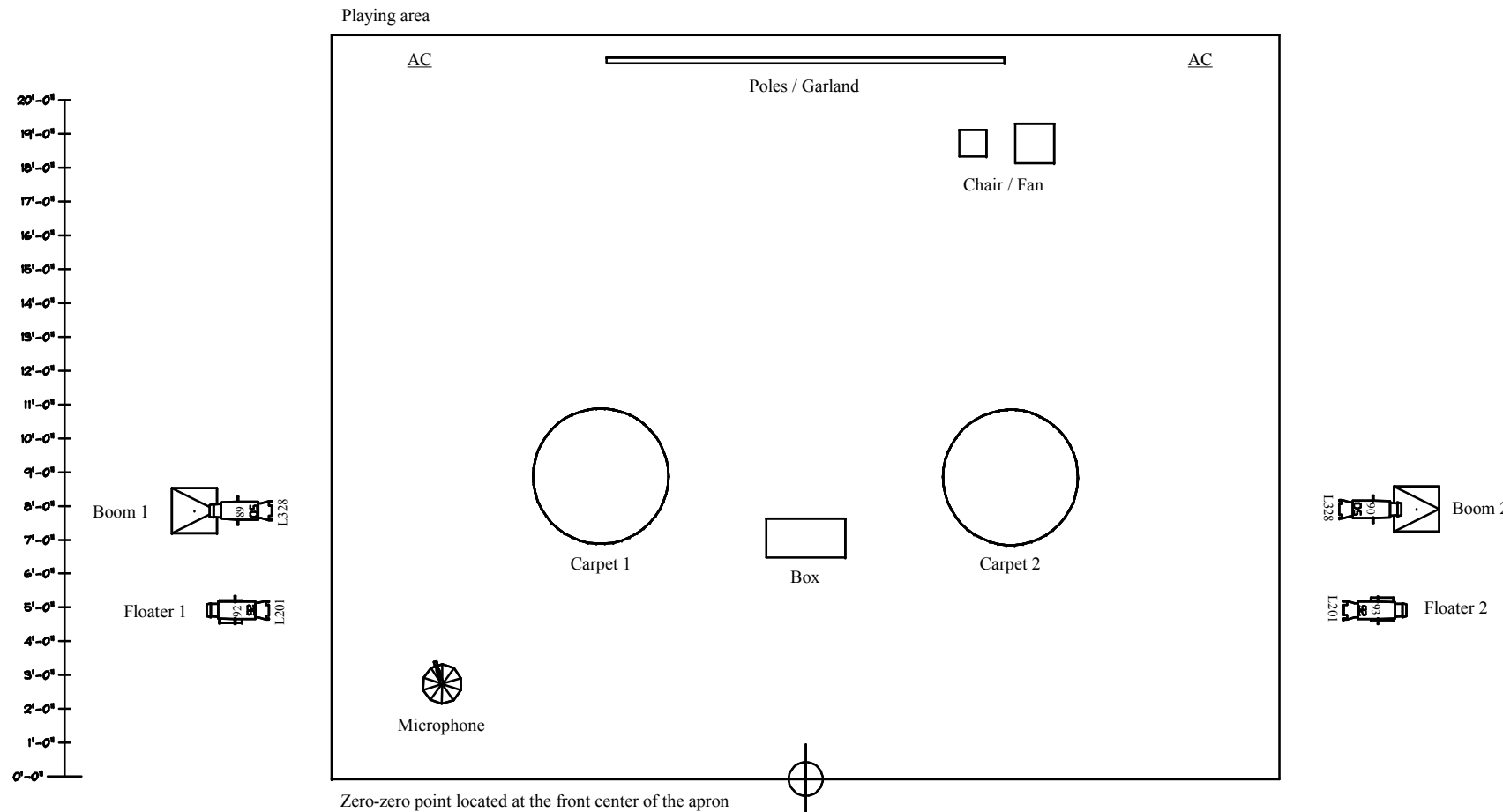
Page 2 of 4



Symbol	Name	Count
	Strand Studio 1kW	12
	Source 4 36	2
	Source 4 26	6
	Source 4 25/50	8
	Source 4 50	8



PLAN VIEW (Floor)



Les Soeurs Kif-Kif

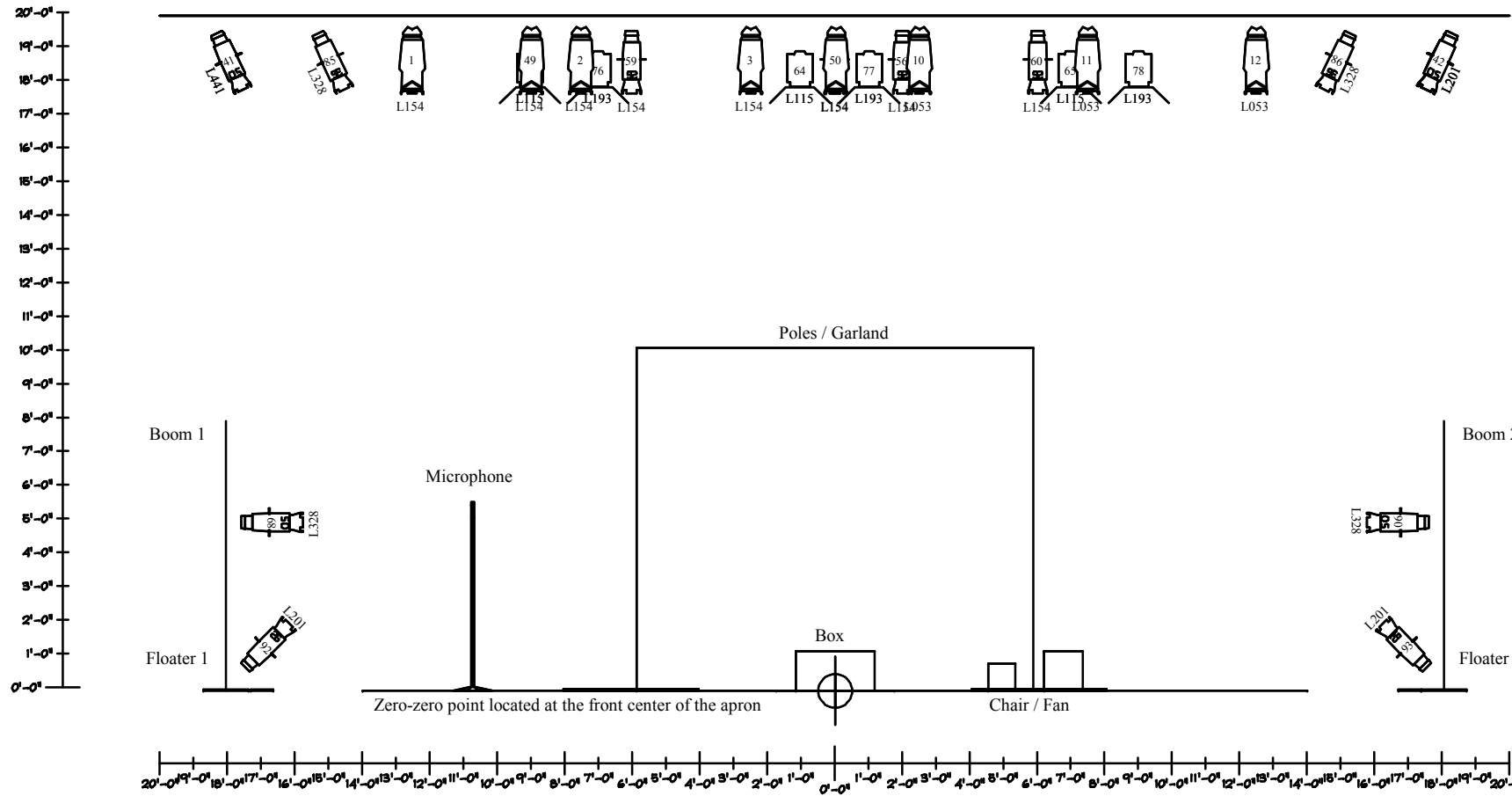
Version 1: 16/09/20

Scale: 1" / 5'

Page 3 of 4

Symbol	Name	Count
	Strand Studio 1kW	12
	Source 4 36	2
	Source 4 26	6
	Source 4 25/50	8
	Source 4 50	8

FRONT VIEW (General)



Les Soeurs Kif-Kif

Version 1: 16/09/20

Scale: 1" / 5'

Page 4 of 4

Symbol	Name	Count
	Strand Studio 1kW	12
	Source 4 36	2
	Source 4 26	6
	Source 4 25/50	8
	Source 4 50	8