

Returns Department

Technical Rider

By The Kif-Kif Sisters



November 23rd 2021

Thank you for booking us! If you have any questions or problems providing any of the items mentioned below, please get in touch with us.

CONTACT

Françoise Lépine

Phone number: 1-418-554-1778

Email: info@kif-kif.ca

Website: www.kif-kif.ca

TOURING TEAM: 2 artists and a technical director

DURATION: 50 minutes

PUBLIC: All audiences. Up to 220 people.

LANGUAGE: French, English, Spanish, Italian or Mute (The show is mostly visual).

STAGE REQUIREMENTS

Ideal dimensions:

- Area: 6.7m X 5.5m (22' X 18')
- Ceiling height: 3.5m (12')
- Wings: 1.5m (5')

Minimum dimensions:

- Area: 5.2m X 3,7m (17' X 12')
- Height: 2.5m (8')

LIGHTING

- 1 programmable light console
- 18 fresnels 1kW or parled, for backlighting
- 11 fresnel 1kW
- 19 profiles 36
- 6 profiles 50
- 4 booms

We would appreciate using the theatre's gels. If that's not possible, we will provide them.

AUDIO

- 1 mixing desk.
- P.A. system, adapted to the theatre.
- 2 side fill monitors.
- A DI box on stage, with cable, for the use our iPod, downstage left.
- We use our own wireless headset sennheiser microphones

MISCELLANEOUS

- 2 extension cords on the stage (USR, USL). We use a maximum of 1200W.
- 1 vacuum cleaner (preference: Shop-Vac) to clean the stage after the show OR
- 1 large broom and a trash can.

STAFF / SCHEDULE

Set-up (4 hours)

- 1 technical director
- 1 light technician
- 1 sound technician

- 30 minutes, load-in
- 45 minutes stage set-up
- 90 minutes, lighting set-up, focus and cue recording
- 30 minutes, cue-to-cue
- 30 minutes, soundcheck

Take down (75 minutes)

- 15 minutes to clean-up the stage
- 60 minutes to disassemble our props (may be done backstage)

DRESSING ROOMS

- 1 table and 2 chairs
- Accessible 2 hours before the show
- No water bottles needed (for ecological reasons)
- If snacks are provided, please kindly provide a vegetarian option.

WARNING

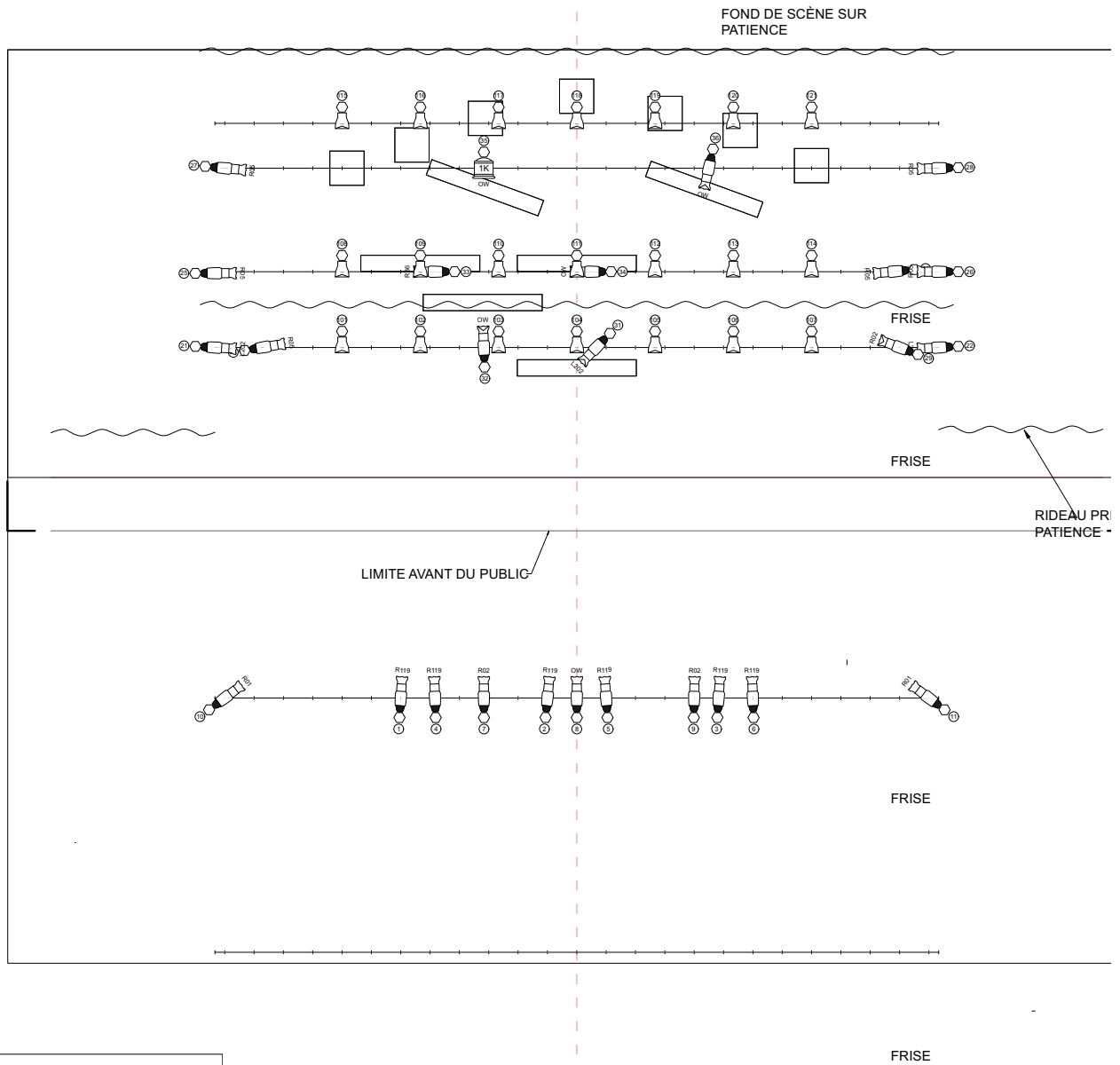
Large-sized confettis will be used during the show. If that poses a problem, please contact us.

TRANSPORTATION (IF PROVIDED)

The material fits in a minivan, with the 2 artists and driver.

ROOMING (IF PROVIDED)

One double room, with two beds and window



Light

	Altman 1K Fresnel @ 1kw	11
	ETC Source4 36deg 750W @ 750w	19
	ETC Source4 50deg 750 @ 750w	6
	ETC Source4 Zoom 25-50deg 750W @ 750w	0
	ETC D40 Vivid SELL40 @ 110w	21
Total		57

Static Accessory

	7.5in 2 Leaf Barn Door	0
--	------------------------	---

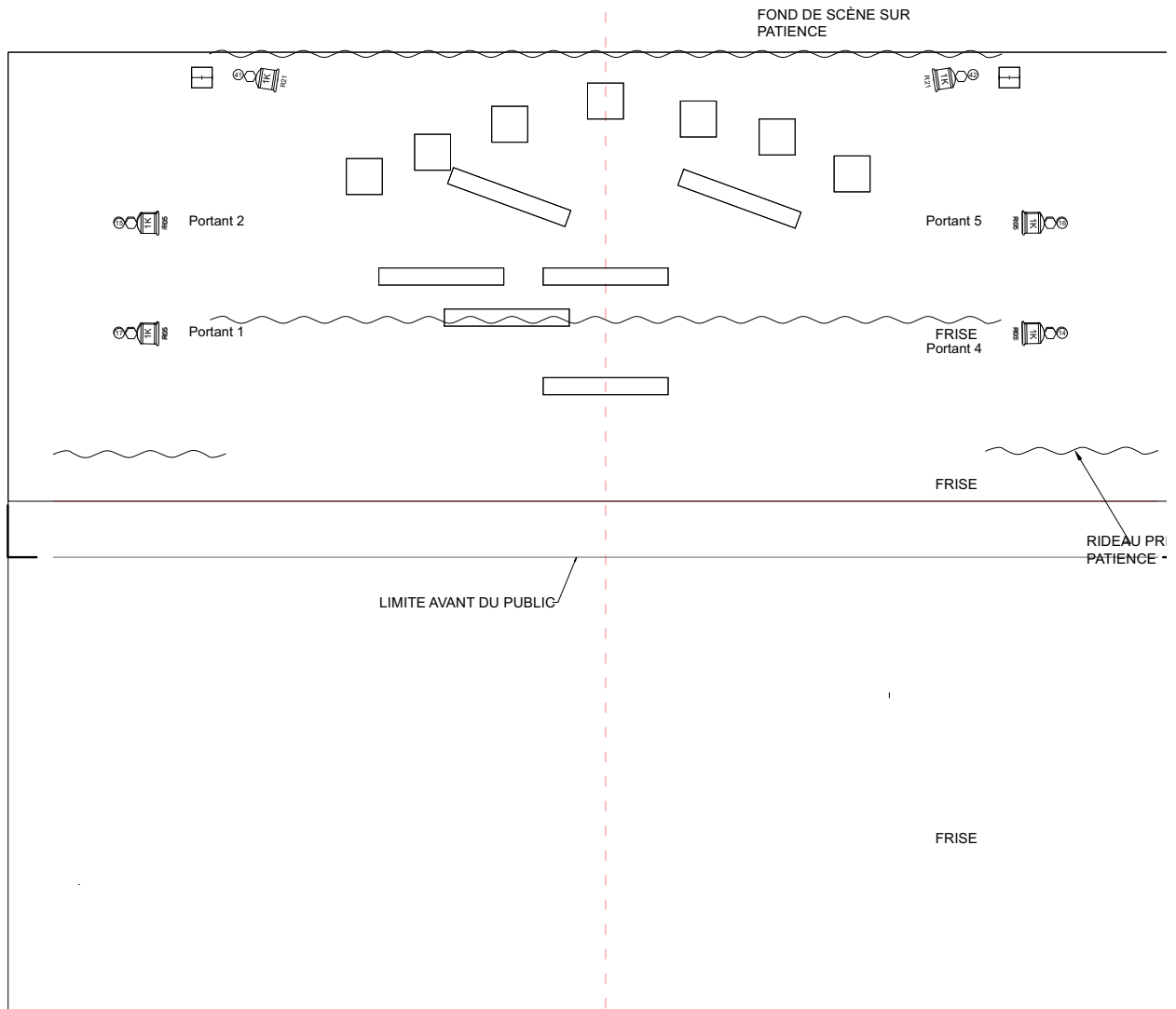
Typical



Color Summary

Color	Size	Count
	L202	3
	OW	1
	OW	4
	R01	2
	R02	3
	R05	8
	R05	6
	R21	2
	R36	1
	R119	6

Ville - City	
Montréal	
Salle - Venue	
MDC Claude-Léveillé	
Les soeurs Kif-Kif	
Plan d'éclairage	
Mise en scène - Director: Les soeurs Kif-Kif	
Le département des retours	
Plan par: Rodolphe St-Arneault	
Dessiné le - Drawn on the:	Echelle - Scale:
2021-10-08	1:48
	1/2



Light

	Altman 1K Fresnel @ 1kw	11
	ETC Source4 36deg 750W @ 750w	19
	ETC Source4 50deg 750 @ 750w	6
	ETC Source4 Zoom 25-50deg 750W @ 750w	0
	ETC D40 Vivid SELL40 @ 110w	21
Total		57

Static Accessory

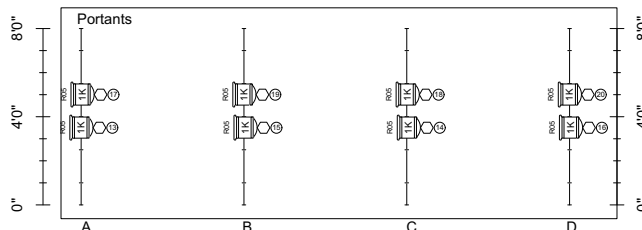
	7.5in 2 Leaf Barn Door	0
--	------------------------	---

Typical



Color Summary

Color	Size	Count
L202	6.25"	3
OW	Altman 1K Fresnel	1
OW	6.25"	4
R01	6.25"	2
R02	6.25"	3
R05	7.75in	8
R05	6.25"	6
R21	7.75in	2
R36	6.25"	1
R119	6.25"	6



Ville - City	
Montréal	
Salle - Venue	
MDC Claude-Léveillé	
Les soeurs Kif-Kif	
Plan d'éclairage	
Mise en scène - Director: Les soeurs Kif-Kif	
Le départements des retours	
Plan par: Rodolphe St-Arneault	
Dessiné le - Drawn on the:	Échelle - Scale:
2021-10-08	1:48
	2/2